

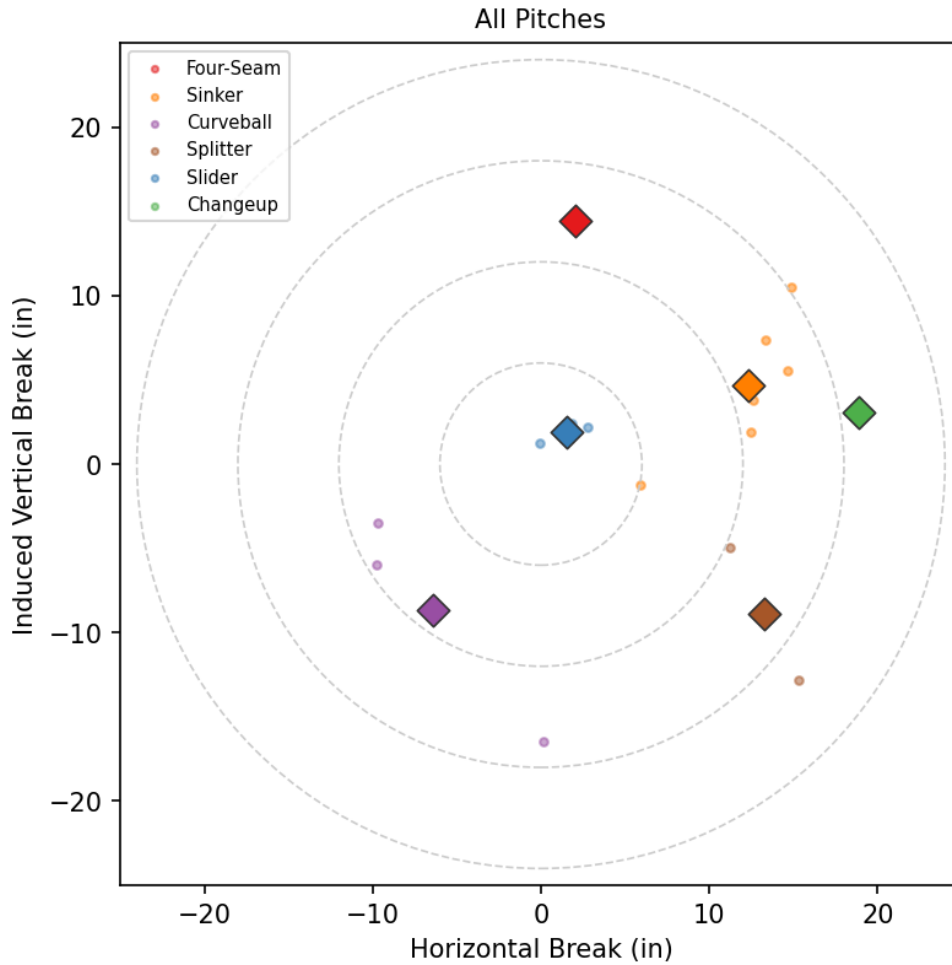
Zac Grotz

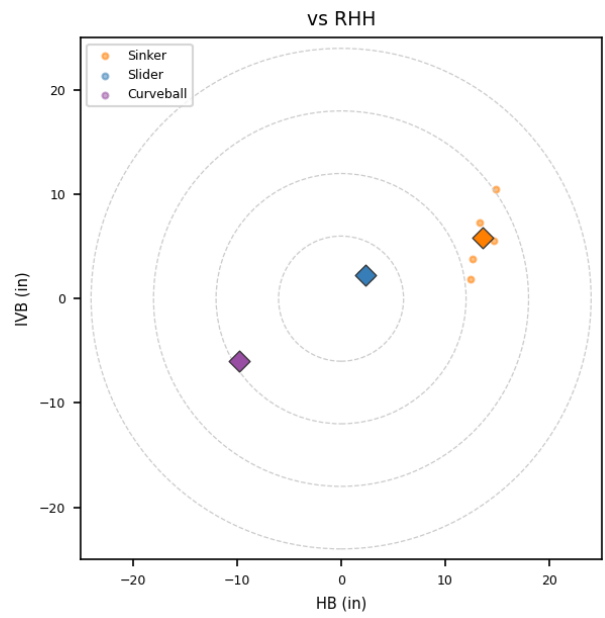
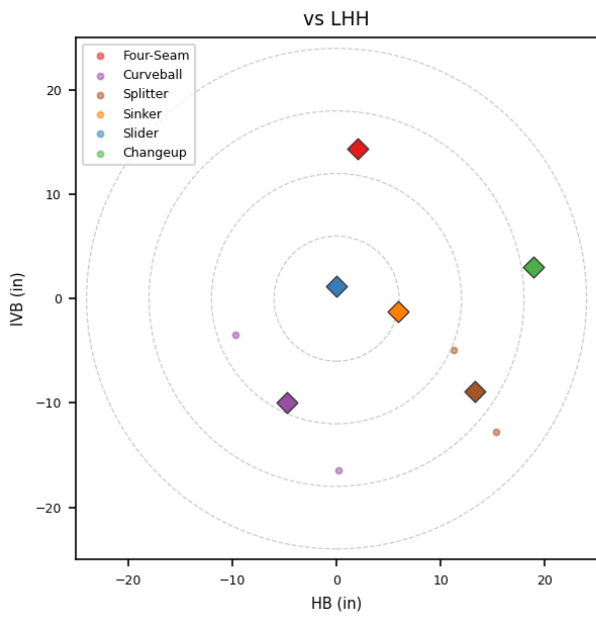
DIA_ROJ | Right | 2026-04-16 to 2026-04-22

Pitching Profile

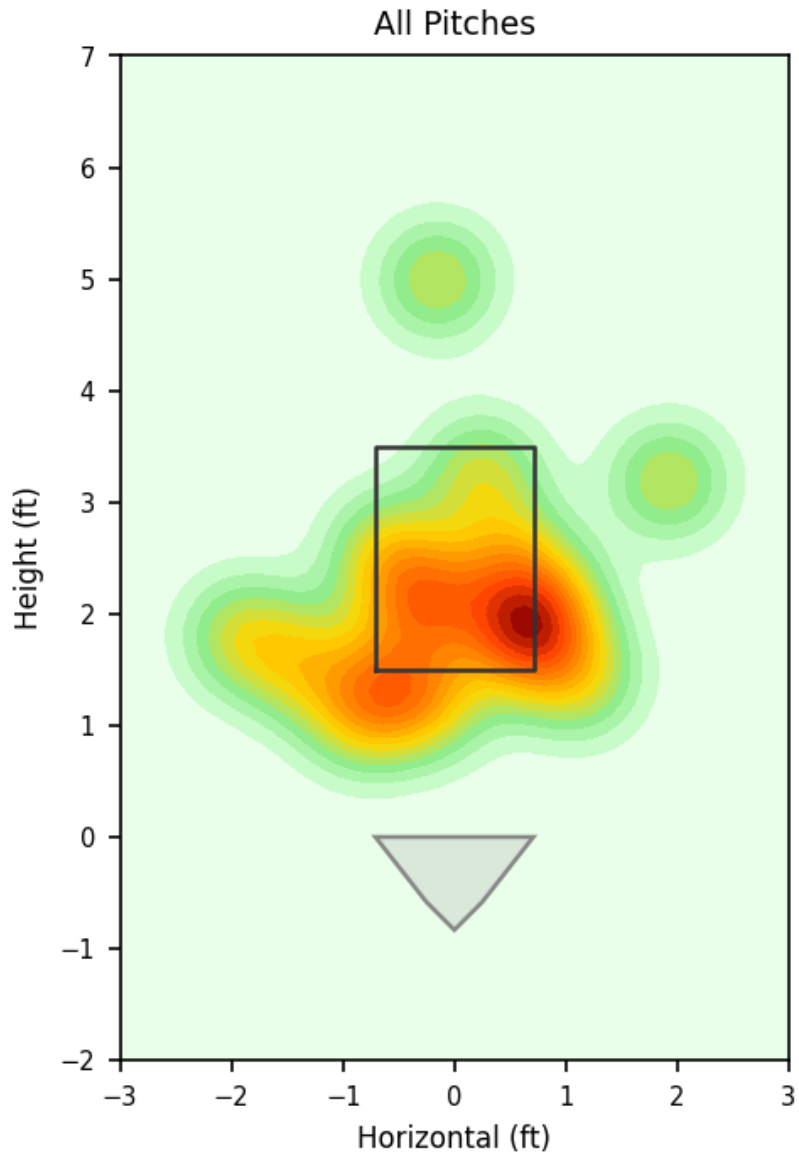
Pitch Type	Count	%	Avg Velo	Max Velo	Avg Spin	IVB	HB	Ext	Whiff%
None	52	76.5%	88.1	93.8	1942.0	-	-	6.5	46.2%
Sinker	6	8.8%	90.4	92.6	2050.0	4.6	12.3	6.8	-
Curveball	3	4.4%	82.8	85.9	2479.0	-8.7	-6.4	6.0	-
Slider	3	4.4%	85.6	86.4	2256.0	1.9	1.5	6.0	-
Splitter	2	2.9%	79.9	80.7	975.0	-8.9	13.3	6.3	100.0%
Changeup	1	1.5%	88.8	88.8	2027.0	3.1	18.9	7.0	-
Four-Seam	1	1.5%	92.1	92.1	2269.0	14.4	2.0	6.5	-

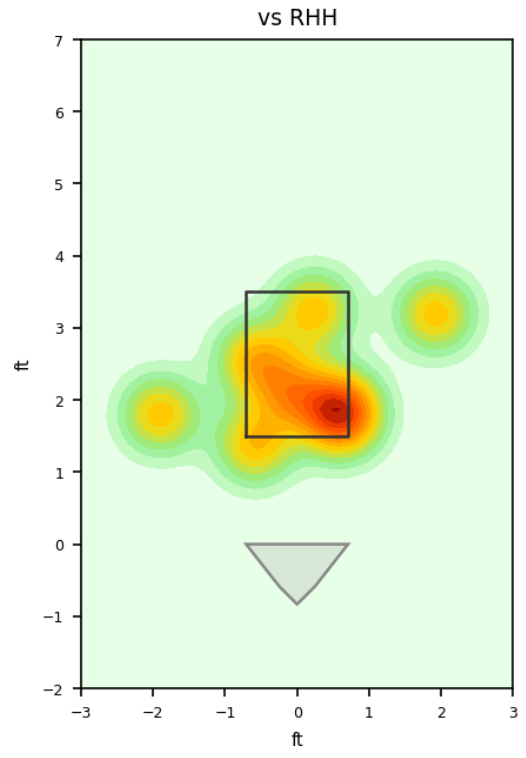
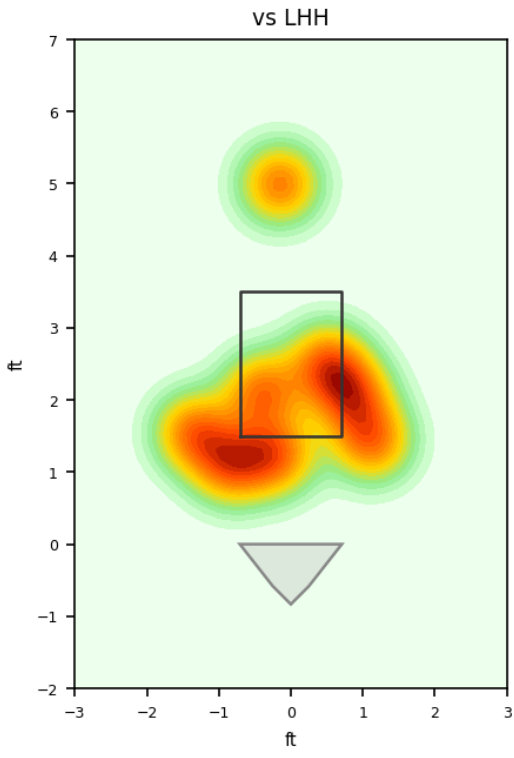
Movement Profile



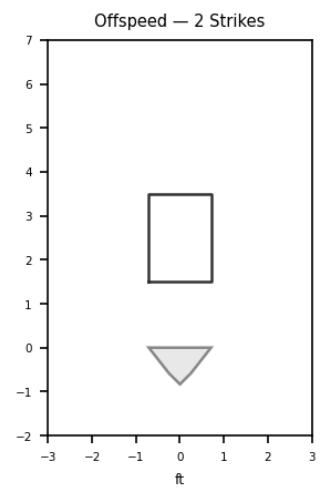
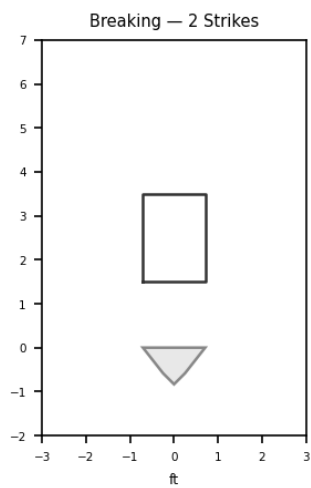
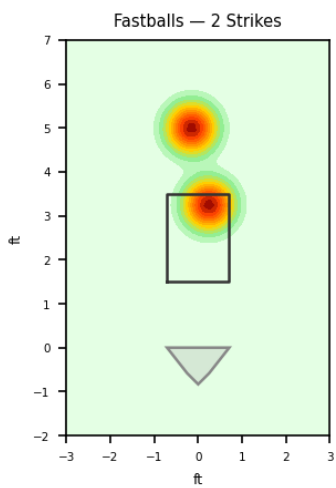
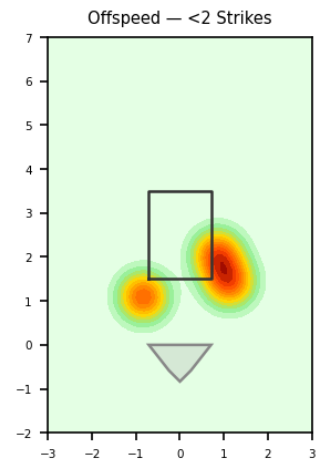
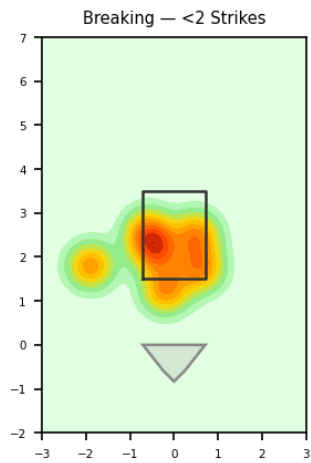
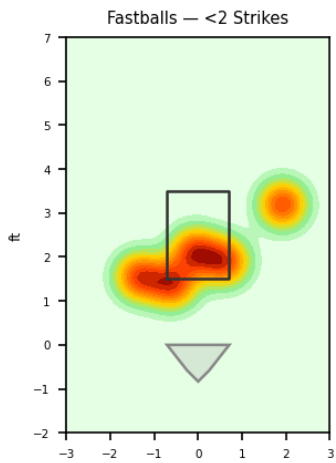


Location Density

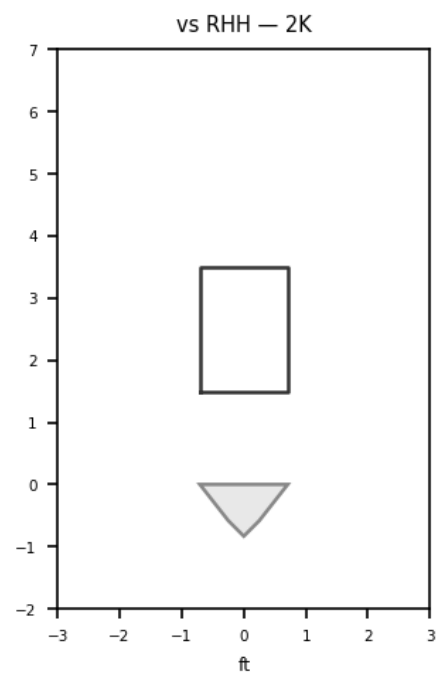
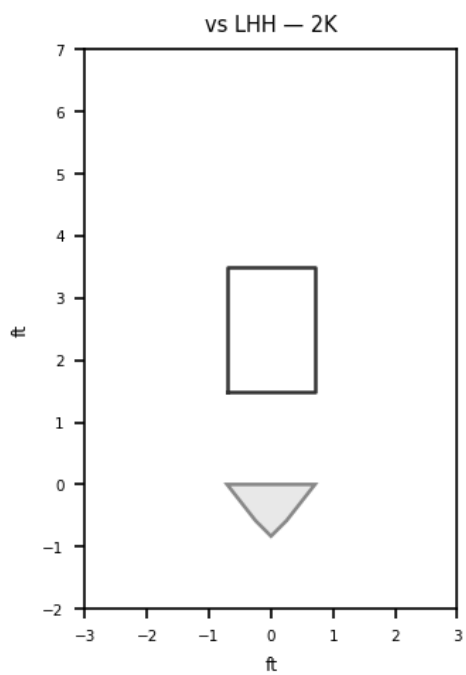
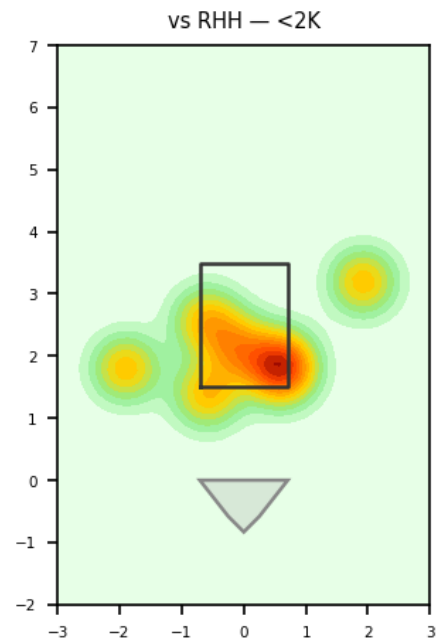
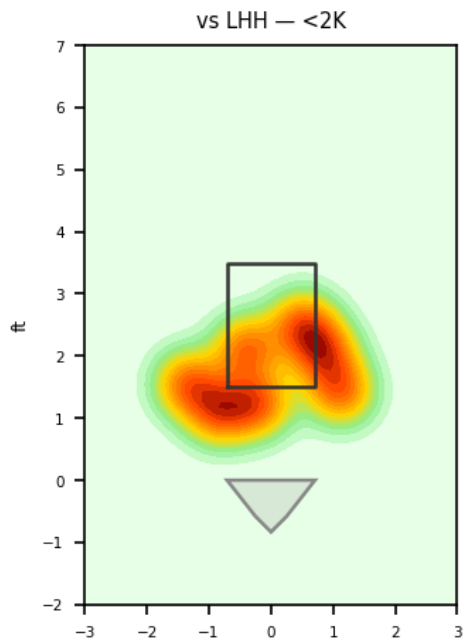




Location by Pitch Type & Count



Location by Handedness & Count



Splits vs LHH

Pitch	Count	%	Velo	Spin	IVB	HB	Whiff%
None	13	61.9%	87.1	1805.0	-	-	50.0%
Curveball	2	9.5%	83.4	2436.0	-10.0	-4.7	-
Splitter	2	9.5%	79.9	975.0	-8.9	13.3	100.0%
Changeup	1	4.8%	88.8	2027.0	3.1	18.9	-
Four-Seam	1	4.8%	92.1	2269.0	14.4	2.0	-
Sinker	1	4.8%	91.8	2140.0	-1.2	5.9	-
Slider	1	4.8%	85.1	2254.0	1.2	-0.1	-

Splits vs RHH

Pitch	Count	%	Velo	Spin	IVB	HB	Whiff%
None	39	83.0%	88.5	1988.0	-	-	45.5%
Sinker	5	10.6%	90.2	2031.0	5.8	13.6	-
Slider	2	4.3%	85.9	2258.0	2.3	2.3	-
Curveball	1	2.1%	81.6	2567.0	-6.0	-9.8	-

Advanced Pitching (TrackMan)

Stat	Value	Stat	Value
Pitches	68	Games	1
Avg Velo	87.8 mph	Max Velo	93.8 mph
Avg Spin	1967.0 rpm	Extension	6.5 ft
IVB	0.5 in	HB	6.7 in
Whiffs	7	BIP	20
Avg Exit Velo	76.0 mph	Dates	2026-04-17 to 2026-04-17

Pitch Mix

Pitch Type	Count	Avg Velo	Max Velo	Avg Spin	IVB	HB	Whiffs	BIP
None	52	88.1	93.8	1942.0	-	-	6	15
Sinker	6	90.4	92.6	2050.0	4.6	12.3	0	1
Curveball	3	82.8	85.9	2479.0	-8.7	-6.4	0	1
Slider	3	85.6	86.4	2256.0	1.9	1.5	0	2
Splitter	2	79.9	80.7	975.0	-8.9	13.3	1	0
Changeup	1	88.8	88.8	2027.0	3.1	18.9	0	1
Four-Seam	1	92.1	92.1	2269.0	14.4	2.0	0	0

Traditional Pitching (API)

Stat	Value	Stat	Value
W-L	1-0	ERA	0.0
G/GS	1/1	SV/HD	0/0
IP	5.0	H/ER/HR	2/0/0
K/BB	5/3	K/BB Ratio	1.67
WHIP	1.0	K/9	9.0
BB/9	5.4	BF	19